

# OFF-THE-SHELF REMOTE TUNER MODULE

A READY TO USE RADIO TUNER FOR  
IN-VEHICLE INFOTAINMENT SYSTEMS



## DIGITALIZATION OF BROADCAST RADIO RECEPTION ALLOWS SIMPLIFIED SYSTEM ARCHITECTURE

Hirschmann Car Communication presents an innovative approach in radio tuner technology: The Remote Tuner Module (RTM) for radio broadcast reception – now also available as Off-the-Shelf (OTS) product.

In a typical in-vehicle entertainment system, the radio is located inside the head unit, along with many other electronic functions. As more functionality is integrated in this space, issues such as packaging, heat dissipation and EMI become a challenge for the OEM.

The RTM concept addresses these challenges by moving the function of radio reception out of the head unit, towards the antennas. This optimizes overall system cost by eliminating antenna amplifiers and reducing coaxial cable needs.

The Off-the-Shelf RTM is a very cost-effective solution. Additional effort for development and adaptation to individual architectures is reduced to a minimum.

## PRODUCT VARIANTS

The Off-the-Shelf Remote Tuner Module is available in three population variants for global coverage of broadcast radio:

EUROPE	US	GLOBAL
AM, FM Phase-Diversity, DAB MRC Diversity, Data Tuner, Seamless Linking	AM, FM Phase-Diversity, HD MRC Diversity, Data Tuner, Seamless Linking (SDARS support on request)	AM, FM Phase-Diversity, Data Tuner
Part Number 920-750-019	Part Number 920-780-019	Part Number 920-781-019

## KEY BENEFITS

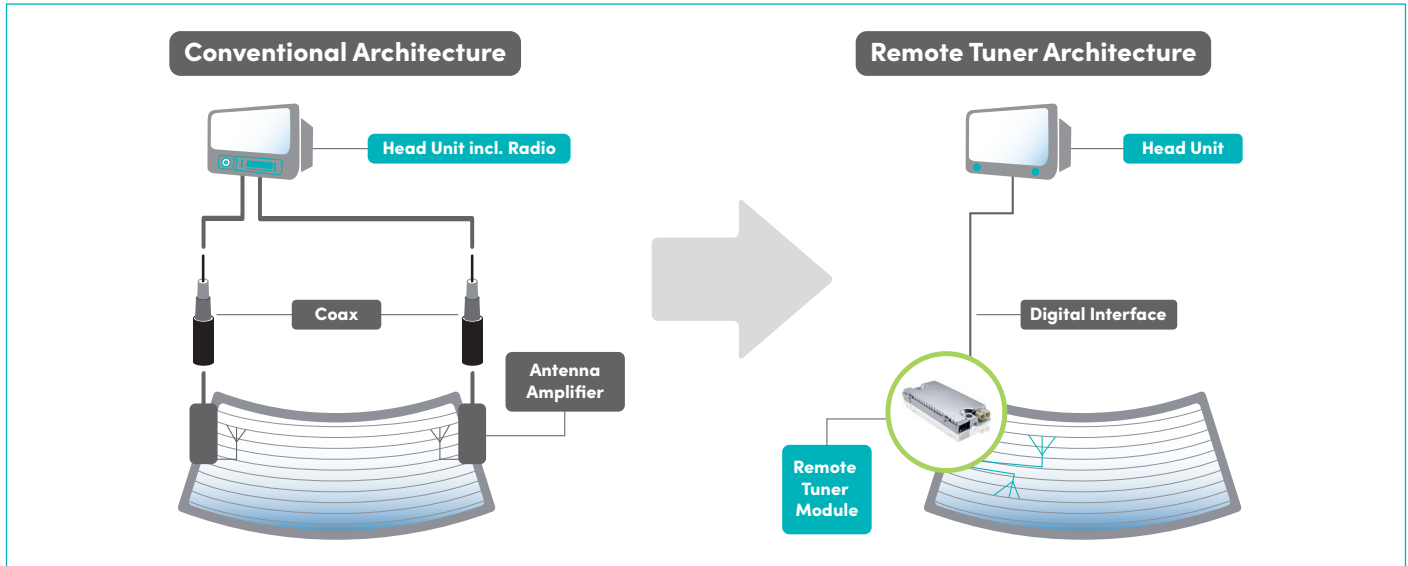
### Lower System Cost

- Reduction of coaxial cables and connectors
- Reduction of antenna amplifiers
- Less expense in general assembly
- Simplified API to reduce integration time
- Plug and play principle means minimum development effort and cost

### TECHNICAL BENEFITS

- Proximity to the antenna optimizes RF performance
- Resolves issues in a head unit like heat dissipation, EMI, packaging and especially part number variants
- Digital audio transmission
- Footprint similar to an antenna amplifier allows easy drop-in replacement

## COMPARISON OF CONVENTIONAL AND REMOTE TUNER ARCHITECTURE



## PRODUCT FEATURES

### Lower System Cost

- AM, FM, DAB and HD Radio Reception
- FM Phase-Diversity, DAB MRC and HD MRC
- Seamless Linking (in Module): FM-FM, FM-DAB, DAB-DAB, FM-HD
- Data services TMC and TPEG
- Background search on dedicated tuner
- A2B Interface (Ethernet interface on request) for control, audio, data and firmware update
- Software API to control entire functionality of RTM

### ANTENNA CONNECTIONS

There are several options depending on the mounting location of the RTM in the vehicle:

#### Standard:

- Dual FAKRA for distant antenna input

#### Optional:

- MQS 3pos for direct antenna input, plus
- Single FAKRA for distant antenna input

## TECHNICAL DETAILS / SPECIFICATION

- Power supply input voltage 9.0 – 18.0 V
- Reverse polarity protection
- Phantom supply 8.0 – 10.0 V for distant antennas
- Integrated antenna diagnosis
- Typical power consumption 3.2 – 5.0 W w/o phantom supply, depending on variant
- Ground connection via M6 bolt with vehicle body

### Operating temperature range:

–40°C to +85°C full functionality \*  
+85°C to +95°C reduced functionality \*\*

**IP rating:** IP5K0

**Weight:** approx. 190 g

**Dimensions:** 120 mm x 54 mm x 15 mm

\*) given a reliable thermal connection to the vehicle body

\*\*) RTM may gradually turn off features to avoid overheating

**In addition to the Off-the-Shelf RTM Hirschmann Car Communication offers customized solutions according to your requirements. Please contact us for more details.**

Hirschmann Car Communication GmbH | A Member of **USI** | Stuttgarter Straße 45 – 51 | 72654 Neckartenzlingen | Germany  
Phone +49 7127 14-0 | Fax +49 7127 14-1060 | [info@hirschmann-car.com](mailto:info@hirschmann-car.com) | [www.hirschmann-car.com](http://www.hirschmann-car.com)

Hirschmann Car Communication and Hirschmann Car Communication (logo) are trademarks. Hirschmann, USI, LTE, GSM, UMTS, WiFi, Galileo, BeiDou, GLONASS, Bluetooth and FAKRA are trademarks. Other products and/or company names might be trademarks of their respective owners.

DISCLAIMER: While Hirschmann Car Communication (HCC) has made every reasonable effort to ensure the accuracy of the information in this document, HCC gives no guarantee that it is error-free, nor does HCC make any other representation, warranty or guarantee that the information is accurate, correct, reliable or current. HCC reserves the right to make any adjustments to the information contained herein at any time without notice. HCC expressly disclaims all implied warranties regarding the information contained herein, including, but not limited to, any implied warranties of merchantability or fitness for a particular purpose. The dimensions in this document are for reference purposes only and are subject to change without notice. Specifications are subject to change without notice. Consult HCC for the latest dimensions and design specifications. © 2024 Hirschmann Car Communication. All Rights Reserved. Published 04-2024